

# MONTHLY MEMBERSHIP PROGRESS REPORT

LOCATION INDIA

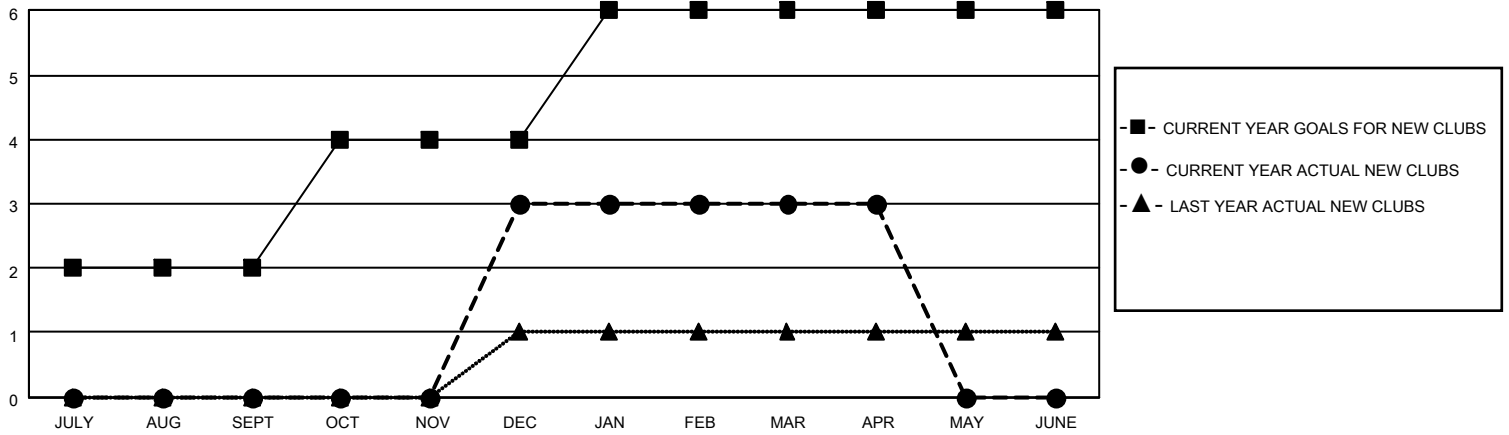
District 322C5

Results as of: 4/30/2021

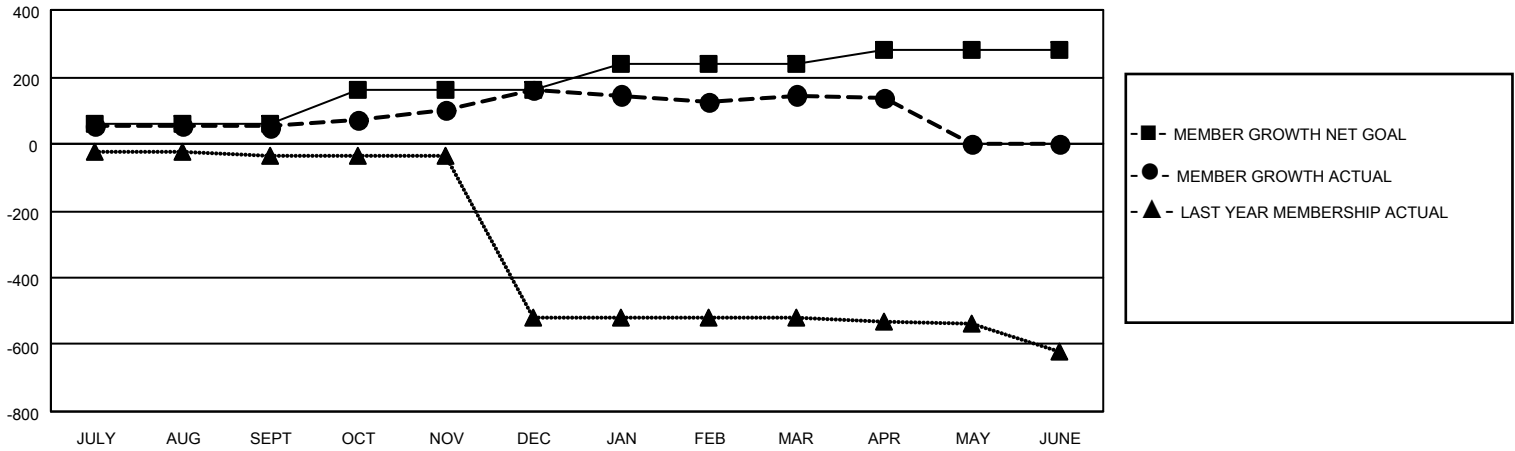
Clubs			
RESULTS FOR 2020-2021			
QUARTER	NEW CLUB GOAL	NEW CLUBS	DROPPED CLUBS
JULY/AUG/SEPT	2	0	0
OCT/NOV/DEC	2	3	0
JAN/FEB/MAR	2	0	1
APR/MAY/JUNE	0	0	0

Members			
RESULTS FOR 2020-2021			
QUARTER	MEMBER GROWTH NET GOAL	MEMBER GROWTH ACTUAL	DROPPED MEMBERS ACTUAL (including transfers)
JULY/AUG/SEPT	60	92	16
OCT/NOV/DEC	100	226	95
JAN/FEB/MAR	80	50	60
APR/MAY/JUNE	40	12	15

**GOALS AND ACTUAL NEW CLUBS CUMULATIVE**



**GOALS AND ACTUAL MEMBERS CUMULATIVE**



DROPPED CLUBS: 1	31 CLUBS OF 51 ADDED 1 OR MORE NEW MEMBERS	<u>GENDER DISTRIBUTION</u>
<u>DROPPED MEMBERS</u>	<a href="#">CLICK HERE FOR CUMULATIVE MEMBERSHIP DATA</a>	MALE 940 (59.99%)
DECEASED 13		FEMALE 627 (40.01%)
CLUB CANCELLED 16		TOTAL FAMILY UNIT MEMBERS 919
OTHER 157		FAMILY MEMBERS PAYING HALF DUES 555
<b>TOTAL 186</b>		